

Cobot Flange Mono Clamp



*Spacer and hardware included for use with Gimatic Quick Changer QC-75

EMI's Cobot mono clamps are lightweight, cost effective and easy to use. Simply mount the clamp directly to your Cobot's ISO-9409-1-50-4-M6 tool flange or to our Cobot Quick Changer with the included hardware and spacer.

Cobot Flange Mono Clamp

Quick#	Part#	Clamp	Price	Wt. *
8101	CRM-MC10-A	Ø10	\$38.29	47g
8102	CRM-MC14-A	Ø14	\$42.61	49g
8103	CRM-MC20-A	Ø20	\$46.33	61g
8104	CRM-MC30-A	Ø30	\$49.82	71g

*Standard weight. The weight is slightly higher when using hardware to attach to the QC-75.

Compatible with your existing EOAT components!

- Available with Ø10, 14, 20, 30mm clamps.
- Can be printed to fit any Cobot.
- Compatible with our wide range of quick changers, vacuum posts, grippers or custom to fit your EOAT.

Cobot Mono Clamp Spacer for Sawyer ClickSmart

This 3D printed spacer enables you to expand Sawyers capabilities by using our Cobot Mono Clamp. Contact engineering if you have any questions.

Mono-Clamp Spacer for Sawyer ClickSmart

Quick#	Part#	Price	Wt.
8105	CRA-MCRT-B	\$15.48	51g



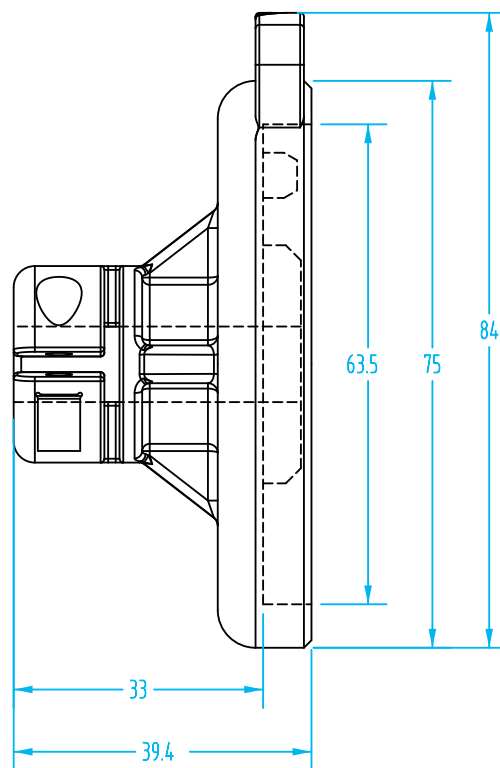
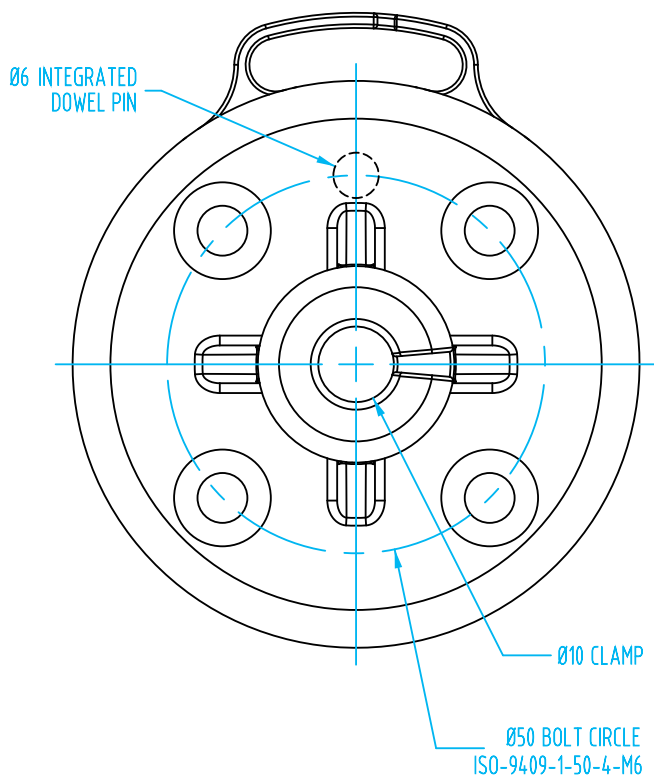
#8105

Easy Needle Gripping

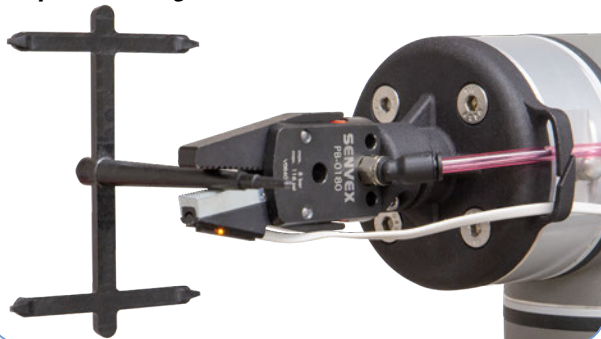


Cobot Flange Mono Clamp

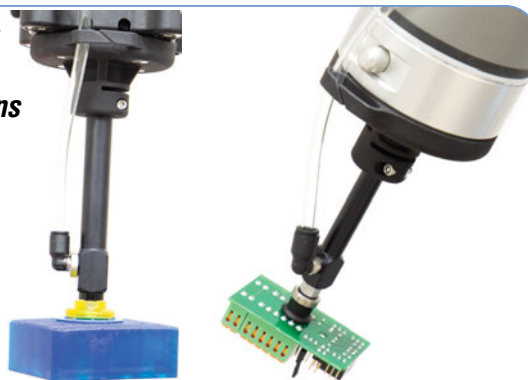
(Quick# 8101 with Ø10mm clamp shown. All mono clamps have same overall dimensions.)



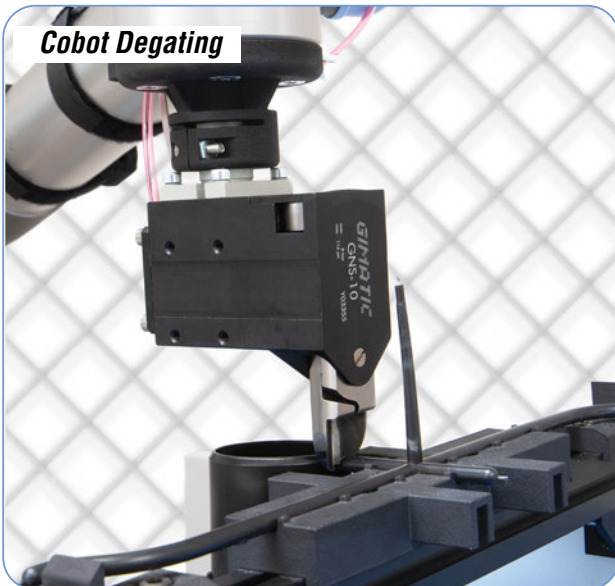
Sprue Picking



Secondary Vacuum Applications



Cobot Degating



ID Gripping

